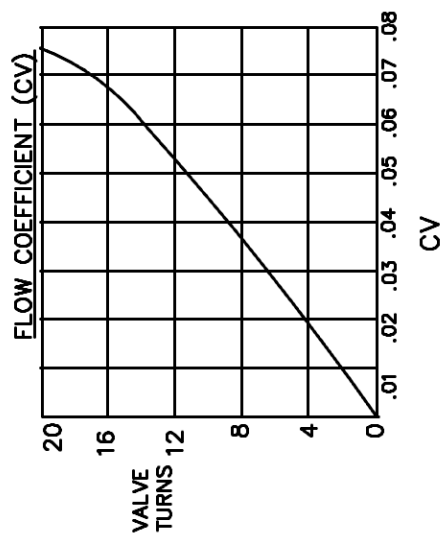
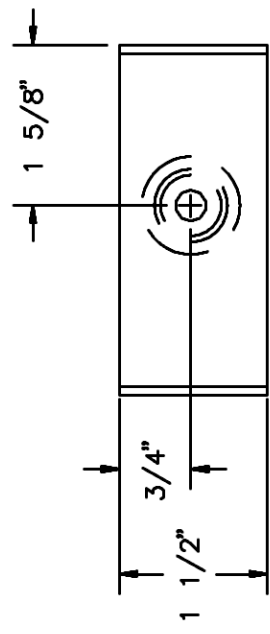


VALVE

TYPE _____ METERING
 MODEL _____ 2315F4Y(MODIFIED)
 MANUFACTURE _____ HOKO
 ORIFICE _____ .062
 CV _____ .077
 STEM TYPE _____ 8° POINT
 FITTINGS _____ 1/4 NPTF
 MAX.PRESSURE _____ 3000 PSI
 TEMPERATURE RANGE _____ -40°C TO +93°C
 MATERIAL:
 BODY _____ SS
 STEM _____ SS
 SEAL _____ VITON

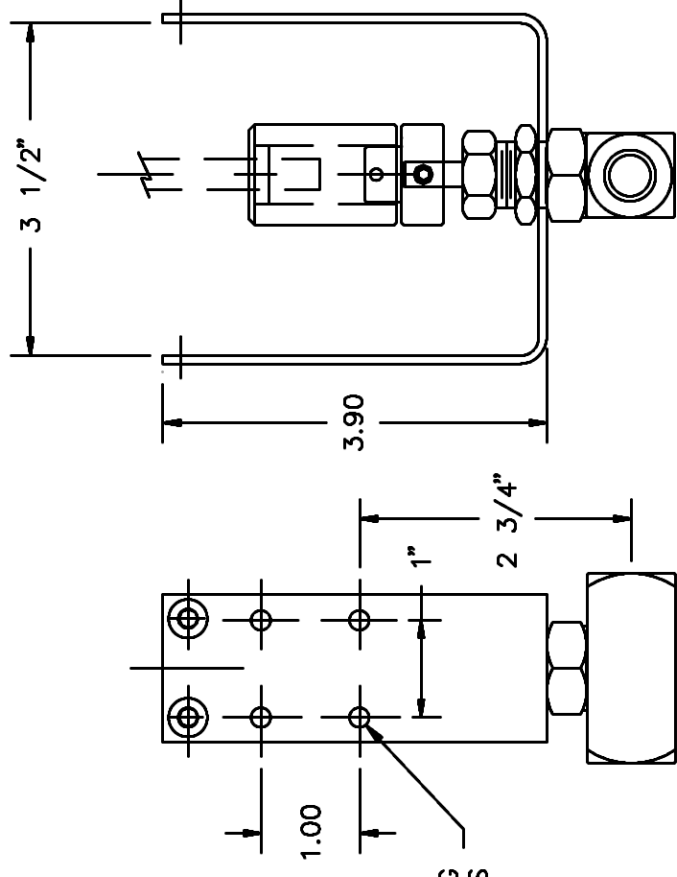
BRACKET

ALUMINUM ANODIZED
COUPLER
 BRASS, NICKEL PLATED
 SET SCREWS & PINS
 ARE STAINLESS STEEL



NOTE:

ROTATIONAL LIFE CAN DEPEND ON MANY VARIABLES, SUCH AS, SEAL TYPE, PRESSURE DROP, TYPE OF GAS OR FLUID METERED, DUTY CYCLE, ETC.
 ALL VALVE DATA IS OFFERED ONLY AS GUIDELINES AND IS NOT WARRANTED BY ETI SYSTEMS INC. CHECK THE VALVE MANUFACTURERS' SPECIFICATIONS FOR PERFORMANCE CRITERIA.
 ETI SYSTEMS ASSUMES NO LIABILITY FOR VALVE FAILURES. (SEE ETI SYSTEMS TERMS AND CONDITIONS FOR ACTUATOR LIABILITY LIMITATIONS)



<u>TOLERANCES</u>	
XX = +/- .010"	FRACT. = +/- 1/64"
XXX = +/- .005"	ANGLES = +/- 1/2°
ALL SPECIFICATIONS SUBJECT TO CHANGE WITHOUT NOTICE.	

SCALE	DATE: 2-24-01
NONE	BY GC
CODE IDENT: 19477	APPRVD



ETI SYSTEMS
 CARLSBAD
 CALIFORNIA

TITLE
 VALVE
 KIT

PART NO.
 VK8-307-V