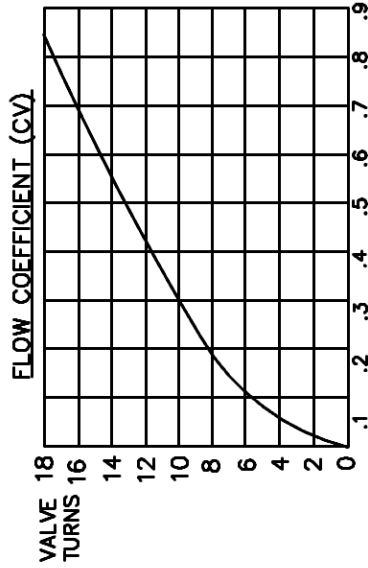


VALVE

TYPE \_\_\_\_\_ METERING  
 MODEL \_\_\_\_\_ 1656G4YA  
 MANUFACTURE \_\_\_\_\_ HOKE  
 ORIFICE \_\_\_\_\_ .031  
 CV \_\_\_\_\_ .0008  
 STEM TYPE \_\_\_\_\_ MICROMETER VERNIER  
 FITTINGS \_\_\_\_\_ 1/4 GYROLOK  
 MAX.PRESSURE \_\_\_\_\_ 5000 PSIG  
 TEMPERATURE RANGE \_\_\_\_\_ -29°C TO +121°C  
 MATERIAL: \_\_\_\_\_

BODY \_\_\_\_\_ SS  
 STEM \_\_\_\_\_ SS  
 SEAL \_\_\_\_\_ VITON

ROTATIONAL LIFE CAN DEPEND ON MANY VARIABLES, SUCH AS, SEAL TYPE, PRESSURE DROP, TYPE OF GAS OR FLUID METERED, DUTY CYCLE, ETC.  
 CONTACT ETI SYSTEMS FOR MORE INFORMATION.



CV X 10<sup>-3</sup>

CAUTION:  
 THIS VALVE IS NOT DESIGNED  
 FOR COMPLETE SHUTOFF.

NOTE:

ROTATIONAL LIFE CAN DEPEND ON MANY VARIABLES, SUCH AS, SEAL TYPE, PRESSURE DROP, TYPE OF GAS OR FLUID METERED, DUTY CYCLE, ETC.

ALL VALVE DATA IS OFFERED ONLY AS GUIDELINES AND IS NOT WARRANTED BY ETI SYSTEMS INC. CHECK THE VALVE MANUFACTURERS' SPECIFICATIONS FOR PERFORMANCE CRITERIA.

ETI SYSTEMS ASSUMES NO LIABILITY FOR VALVE FAILURES. (SEE ETI SYSTEMS TERMS AND CONDITIONS FOR ACTUATOR LIABILITY LIMITATIONS)

TOLERANCES  
 XX = +/- .010" FRACT. = +/- 1/64"  
 XXX = +/- .005" ANGLES = +/- 1/2"  
 ALL SPECIFICATIONS SUBJECT TO CHANGE WITHOUT NOTICE.

SCALE \_\_\_\_\_ NONE  
 DATE: 10-02-01  
 BY AT  
 APPROVD  
 CODE IDENT: 19477

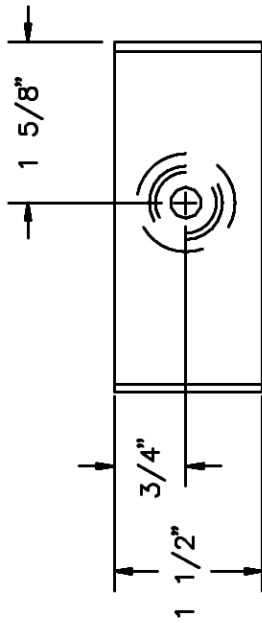


ETI SYSTEMS  
 CARLSBAD  
 CALIFORNIA

TITLE  
 VALVE  
 KIT

PART NO.

VK8-304-V



BRACKET  
 ALUMINUM ANODIZED  
 COUPLER  
 BRASS, NICKEL PLATED  
 ADAPTOR, BLUE ANODIZED  
 SET SCREWS, PINS  
 ARE STAINLESS STEEL

