

VALVE

TYPE ----- NEEDLE
 MODEL ----- SS-1RS6-V
 MANUFACTURE ----- WHITEY
 ORIFICE ----- .250
 CV ----- .73
 FITTINGS ----- 3/8 SWAGelok
 MAX. PRESSURE ----- 5000 PSIG
 TEMPERATURE RANGE ----- -54°C TO +232°C

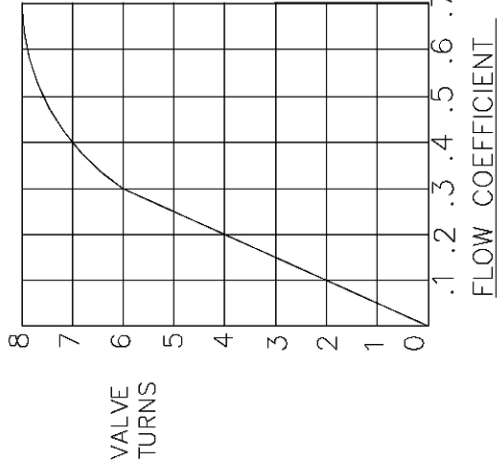
MATERIAL:
 BODY ----- SS
 STEM ----- SS
 SEALS ----- VITON

BRACKET
 ALUMINUM ANODIZED
COUPLER

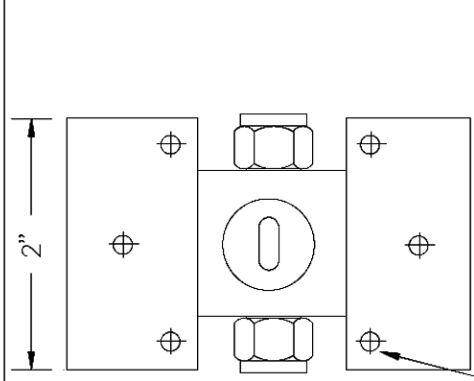
BRASS, NICKEL PLATED
 SET SCREWS & PINS
 ARE STAINLESS STEEL

ROTATIONAL LIFE CAN DEPEND ON MANY VARIABLES, SUCH AS, SEAL TYPE, PRESSURE DROP, TYPE OF GAS OR FLUID METERED, DUTY CYCLE, ETC.

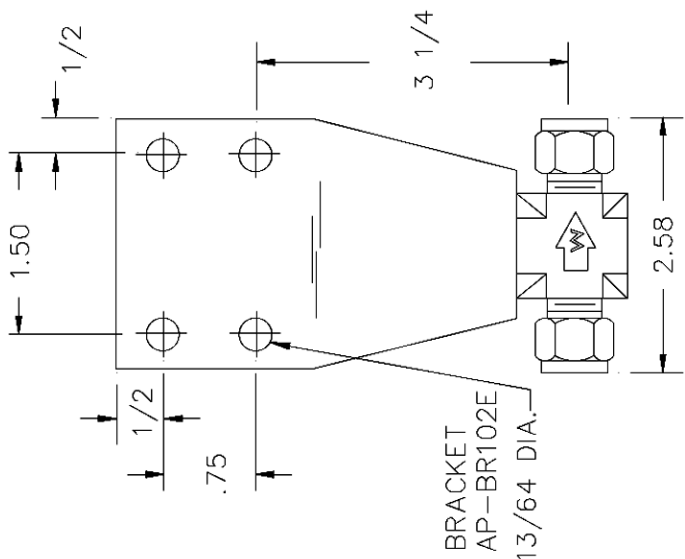
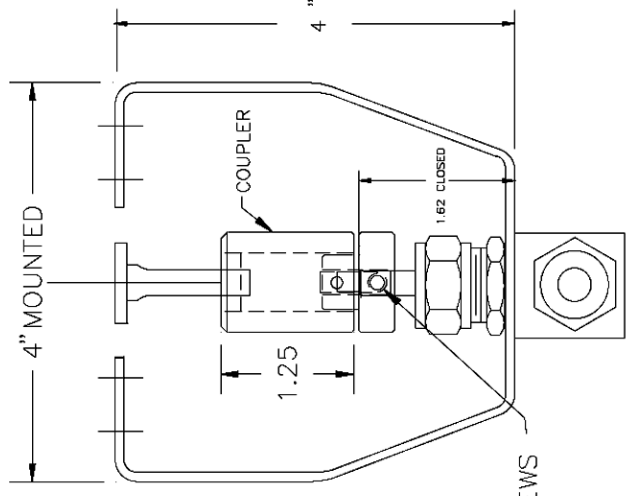
CONTACT ETI SYSTEMS FOR MORE INFORMATION.



NOTE:
 ALL VALVE DATA IS OFFERED ONLY AS GUIDELINES AND IS NOT WARRANTED BY ETI SYSTEMS INC. CHECK THE VALVE MANUFACTURERS' SPECIFICATIONS FOR PERFORMANCE CRITERIA.
 ETI SYSTEMS ASSUMES NO LIABILITY FOR VALVE FAILURES. (SEE ETI SYSTEMS TERMS AND CONDITIONS FOR ACTUATOR LIABILITY LIMITATIONS)



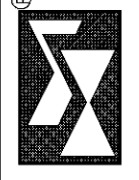
MOUNTS TO ACTUATOR VA21



BRACKET AP-BR102E
 13/64 DIA.

TOLERANCES
 XX = +/- .010" FRACT. = +/- 1/64"
 XXX = +/- .005" ANGLES = +/- 1/2"
 ALL SPECIFICATIONS SUBJECT TO CHANGE WITHOUT NOTICE.

SCALE NONE
 BY
 APPRVD BT
 CODE IDENT: 19477



ETI SYSTEMS
 CARLSBAD
 CALIFORNIA

TITLE
 VALVE
 KIT

PART NO.
 VK21-259-V