

VALVE

TYPE \_\_\_\_\_ NEEDLE  
 MODEL \_\_\_\_\_ SS-18RF8-V  
 MANUFACTURE \_\_\_\_\_ WHITEY  
 ORIFICE \_\_\_\_\_ .375  
 CV \_\_\_\_\_ 1.8  
 FITTINGS \_\_\_\_\_ 1/2 NPTF  
 MAX. PRESSURE \_\_\_\_\_ 5000 PSIG  
 TEMPERATURE RANGE \_\_\_\_\_ -54°C TO +232°C

MATERIAL:

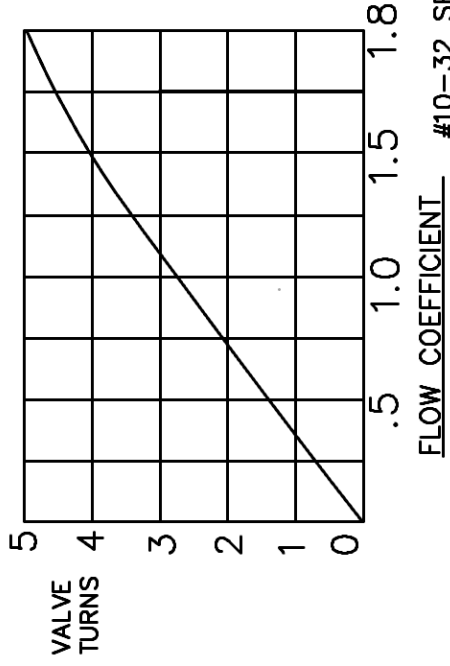
BODY \_\_\_\_\_ SS  
 STEM \_\_\_\_\_ SS  
 SEALS \_\_\_\_\_ VITON

BRACKET

ALUMINUM ANODIZED  
 COUPLER

BRASS, NICKEL PLATED  
 SET SCREWS & PINS  
 ARE STAINLESS STEEL

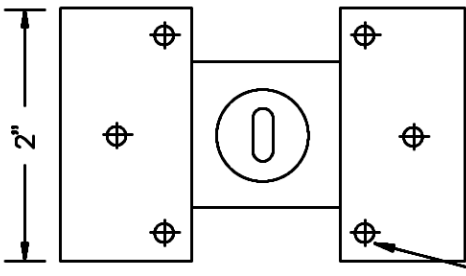
ROTATIONAL LIFE CAN DEPEND ON MANY VARIABLES,  
 SUCH AS, SEAL TYPE, PRESSURE DROP, TYPE OF GAS OR  
 FLUID METERED, DUTY CYCLE, ETC.



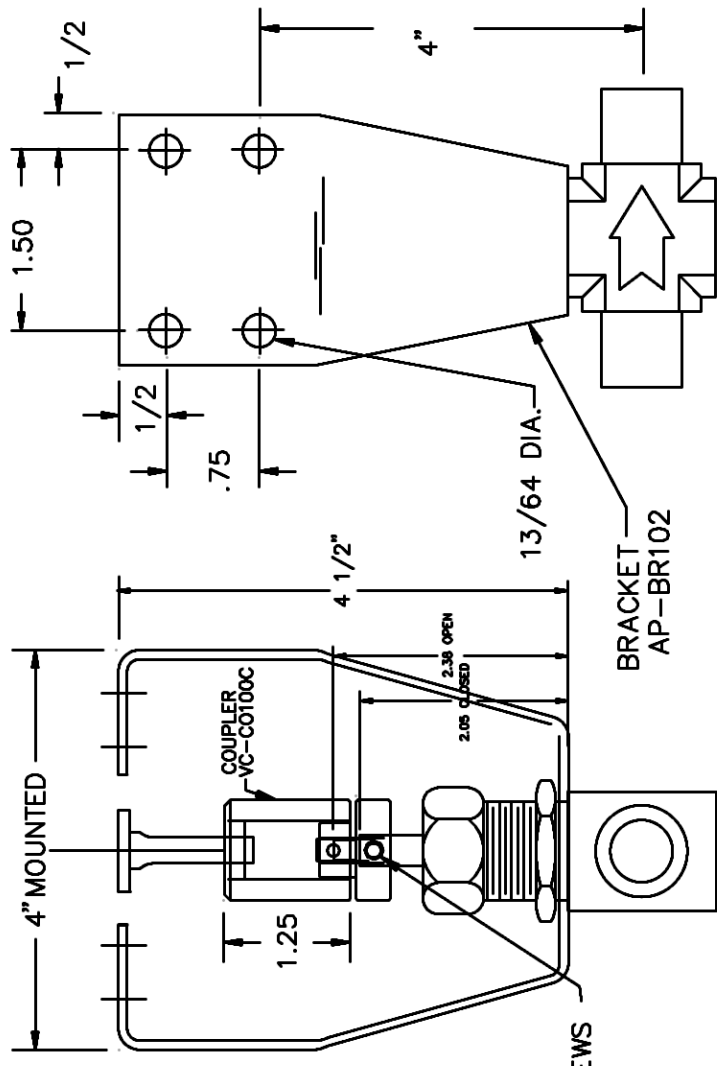
NOTE:

ALL VALVE DATA IS OFFERED ONLY AS  
 GUIDELINES AND IS NOT WARRANTED BY ETI SYSTEMS INC.  
 CHECK THE VALVE MANUFACTURERS' SPECIFICATIONS FOR  
 PERFORMANCE CRITERIA.

ETI SYSTEMS ASSUMES NO LIABILITY FOR VALVE FAILURES.  
 (SEE ETI SYSTEMS TERMS AND CONDITIONS FOR ACTUATOR LIABILITY LIMITATIONS)



MOUNTS TO ACTUATOR VA21



TOLERANCES

XX = +/- .010" FRACT. = +/- 1/64"  
 XXX = +/- .005" ANGLES = +/- 1/2"

ALL SPECIFICATIONS SUBJECT TO CHANGE WITHOUT NOTICE.

SCALE	DATE: 7-1-99
NONE	BY
CODE	APPRVD
IDENT: 19477	BT



ETI SYSTEMS  
 CARLSBAD  
 CALIFORNIA

TITLE  
 VALVE  
 KIT

PART NO.  
 VK21-207-V